

PINZE PMT

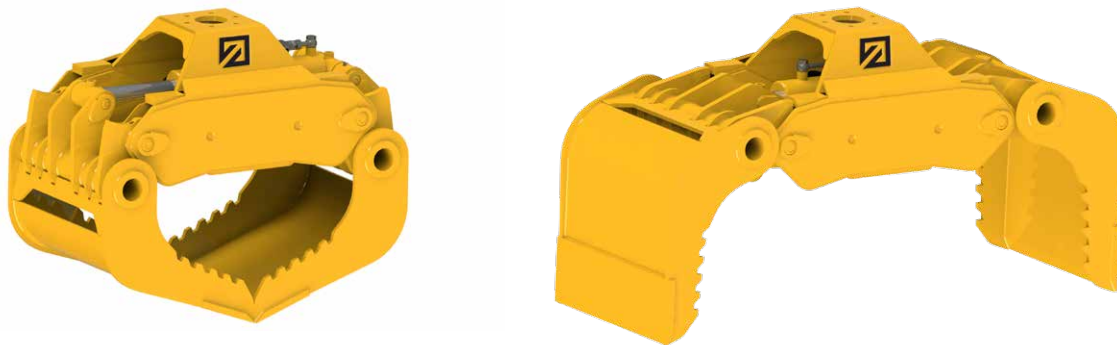
I - Pinza per la movimentazione di massi

GB - Grab for rocks handling

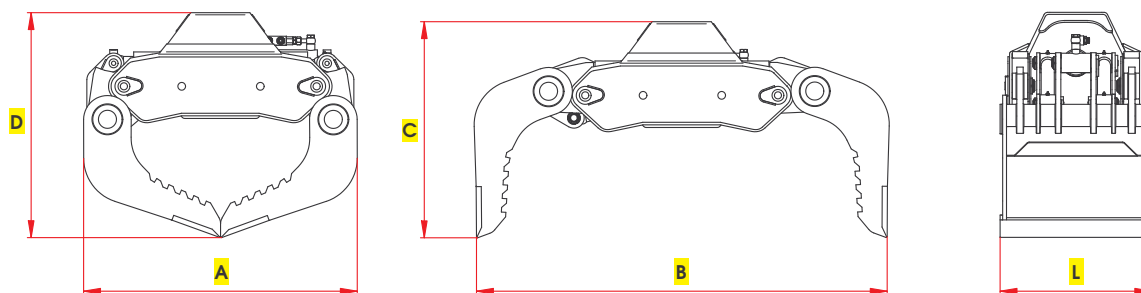
D - Greifer für den Umschlag von Felsen und Steinen

F - Pince d'enrochement et de tri

E - Pinza para el manejo de rocas





DISEGNO TECNICO / TECHNICAL DRAWING



Portata gru a braccio sfilato / Lifting capacity at the end of boom



Peso escavatore / Excavator weight

Modello Type	Portata Load kg	Peso Weight kg	Pressione Pressure Max bar	Portata olio Oil flow Lt/min	 Ton.	 Ton.	A mm	B mm	C mm	D mm	L mm
PMT 110	1100	127	200	35	0,3-0,6	2,0-4,0	670	1015	530	560	390
PMT 210	1600	180	200	40	0,4-0,8	3,5-5,0	770	1160	580	615	410
PMT 310	2000	300	200	50	0,8-1,6	5,0-9,0	900	1370	710	750	490
PMT 410	3500	400	200	60	1,5-2,8	8,0-13	1060	1610	830	880	590
PMT 510	4500	600	200	80	1,5-3,5	12-18	1200	1830	950	1000	650